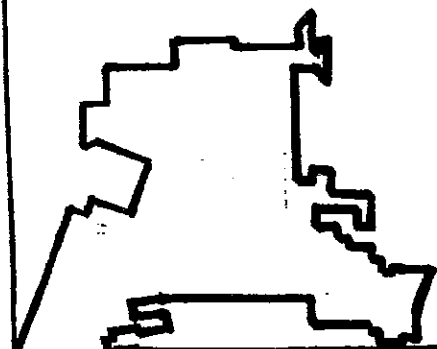


TRASH

ENCLOSURE

STANDARDS



— PLACENTIA —

CITY OF PLACENTIA  
DEPARTMENT OF DEVELOPMENT SERVICES

STANDARDS FOR REFUSE BIN ENCLOSURES

Refuse Bin Enclosures in all new developments shall be reviewed by the Planning Division and Placentia Disposal, Inc. (714) 630-8610. Prior to any Planning Commission/City Council action the number and size of bins/enclosures required, collection access/egress, beautification/appearance and structural considerations will be addressed. The following criteria will be used as guidelines:

- Adequate buffering from residential zones
- Service vehicle approach within 10 feet of the enclosure on the same flat level surface as the enclosure floor. Concrete apron surface for continuous heavy truck usage is required.
- Service truck cannot be required to back into traffic.
- Co-location with electrical transformer enclosure (coordinate with Southern California Edison Company) is encouraged.
- Landscaping, at least three (3) feet in width on each side and rear where freestanding, when enclosure is visible to public.
- Access unobstructed by parked cars
- Enclosure gate swing cannot obstruct any vehicular drive aisle.

Enclosure design shall use the attached specification including:

- Materials that match or are compatible with the adjoining structures and walls.
- Designs incorporation walk-through access for trash placement.
- Level concrete approach to extend eight (8) feet from enclosure opening and six (6) feet each end for restaurant and service station uses.
- Slab four (4) inches thick minimum with maximum slope of 1/8" per foot slope.
- Walls and gate six (6) feet high.
- Bond beam block on last course w/#4 Bar @ 24" centers, solid grouting.
- Enclosure depth six (6) feet minimum; width eight (8) feet minimum (interior dimensions).
- Gates to have corrosion resistant hardware with exterior hinging with heavy 3/4" or larger pin size and 3/4" bolt type latch.

- Steel door frames and steel opaque gates.
- Internal concrete bumper curbs 4" high, 6" wide (see attached specification).
- Trellis or lattice cover required when enclosure is in view of multi-story structures.
- 96 inch minimum vertical clearance for refuse container lid swing (upward).

STANDARD MINIMUM SERVICE REQUIREMENTS

1. Standard commercial container is three (3) cubic yard capacity.
2. Standard minimum service is once weekly.
3. Maximum service is once daily except Sunday.
4. Standard rubbish generation factor minimum is three (3) cubic yards per 3,000 square feet of commercial floor space per week.
5. Standard minimum billing is one (1) three (3) yard container once per week. No split billings.
6. The owner of a commercial complex with units less than 300 square feet shall be required to provide for rubbish collection service as necessary in the rental or lease agreements on those units.

Contact Placentia Disposal Customer Service at (714) 630-8610 standard industrial rubbish generation factor minimum.

Number of Bin/Enclosure required:

1. Commercial:

- . A minimum of one (1) container per 9,000 square feet of single floor single floor space;
- . Multiple units of less than 1,500 square feet shall have one (1) bin and enclosure required based on one (1) bin per 3,000 square feet of aggregate floor space.

2. Industrial:

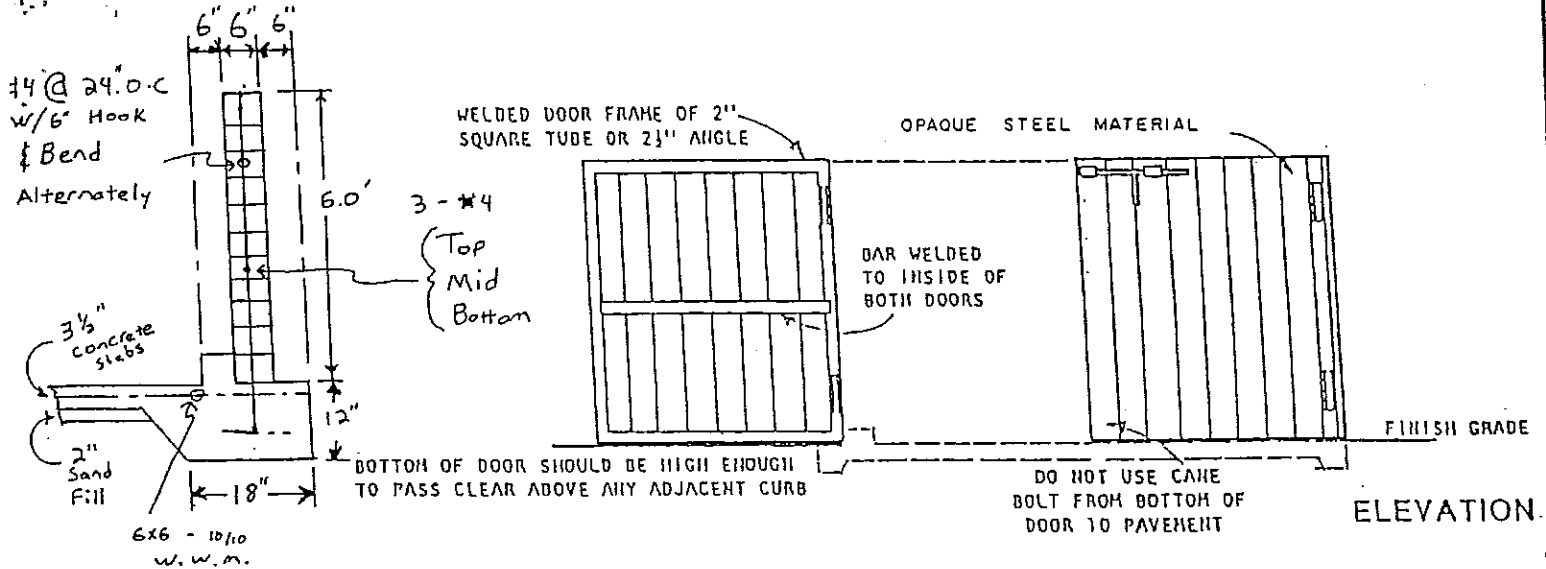
.Based on number of units, size and type of business.

Central bin enclosure for more than two (2) bins shall not be permitted without a documented agreement that the property owner shall bear the sole responsibility for janitorial servicing of said enclosure.

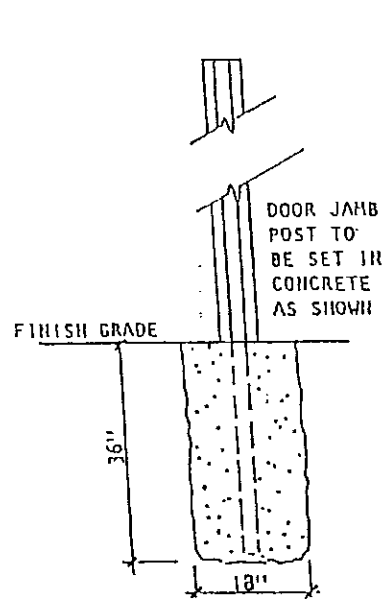
3. Residential:

- .Four (4) barrels/containers for five (5) units or
- .One (1) bin for apartment complexes of five (5) to ten (10) units;
- .Each additional five (5) to fifteen 15 units shall have one (1) additional bin or have more than one (1) pickup per week per bin.

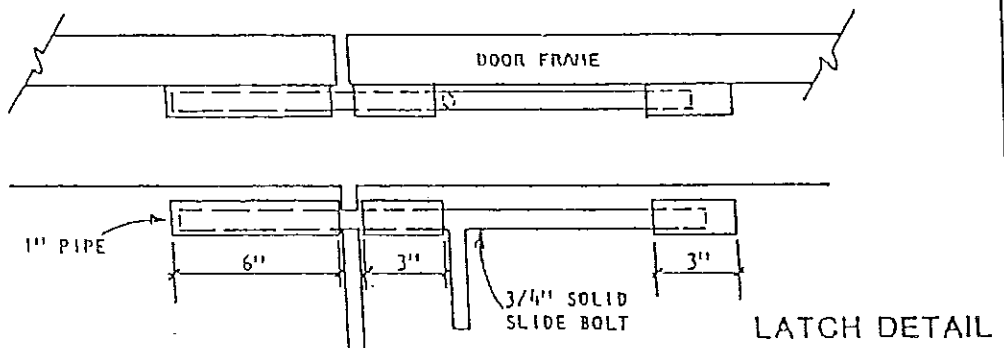
4. To begin service contact Placentia Disposal Customer Service at (714) 630-8610.



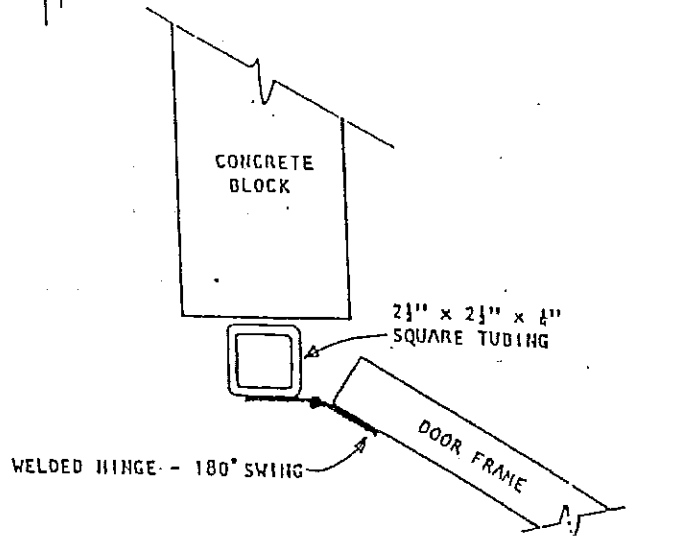
ELEVATION.



FOUNDATION DETAIL



LATCH DETAIL



HINGE DETAIL

NOTES:

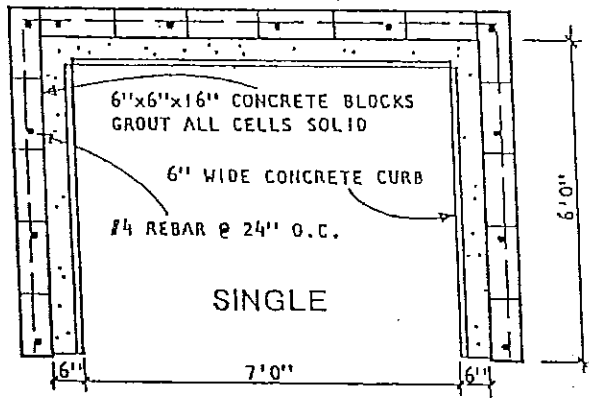
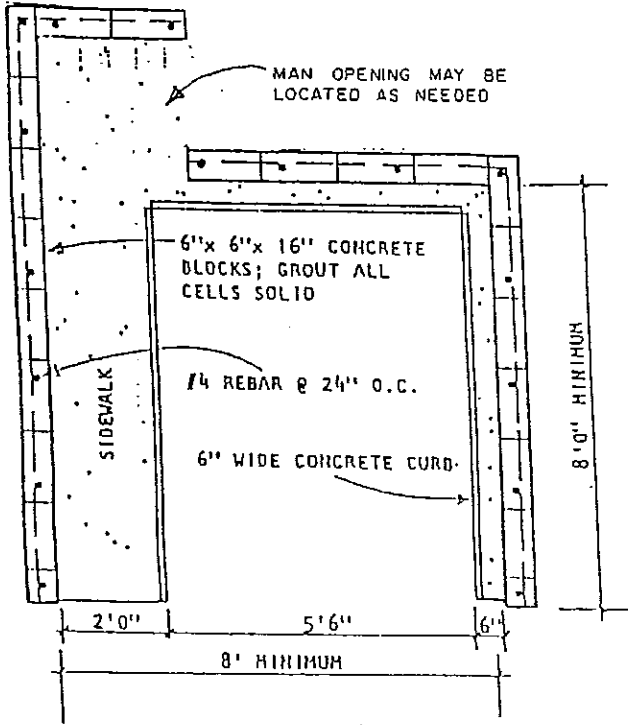
3. Location, size and number of structures will be determined by the Sanitation Inspector prior to issuance of building permit. -
4. All hardware to be corrosion resistant.
5. Plans must show refuse area in detail.
6. A trellis or lattice cover required when enclosure is located in vicinity/view of two-story residential structures
7. Trash enclosure doors shall not swing out into driveaisles, parking spaces, etc.
8. Trash enclosure block type, color, etc. and door color shall be subject to planning division approval.

**TYPICAL SWINGING DOOR DETAILS**

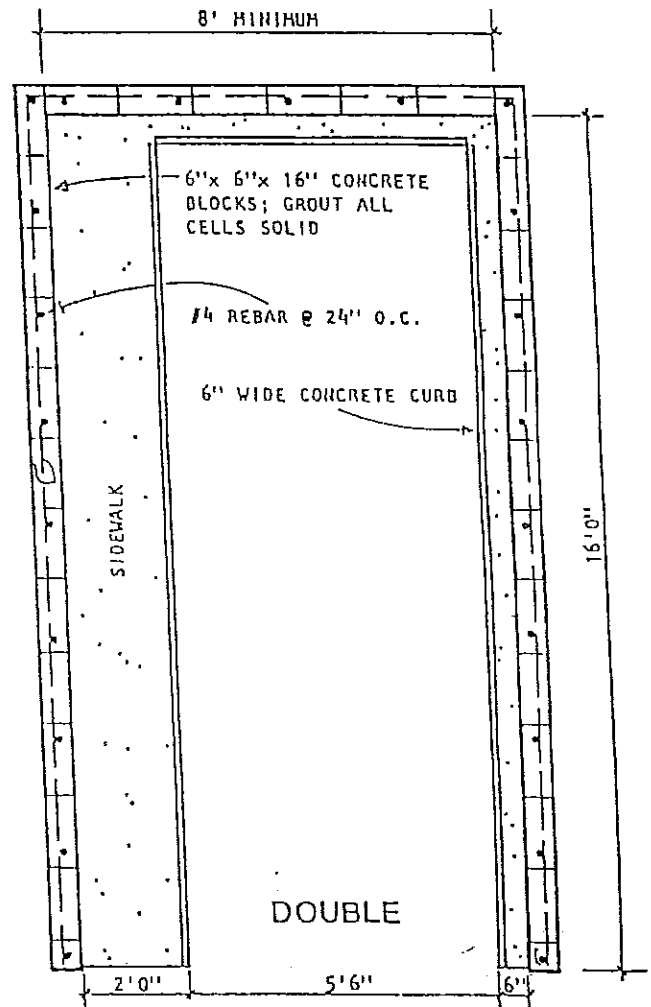
Refuse Container Enclosure for Multiple-Family Residential, Commercial and Industrial Use

NOTES:

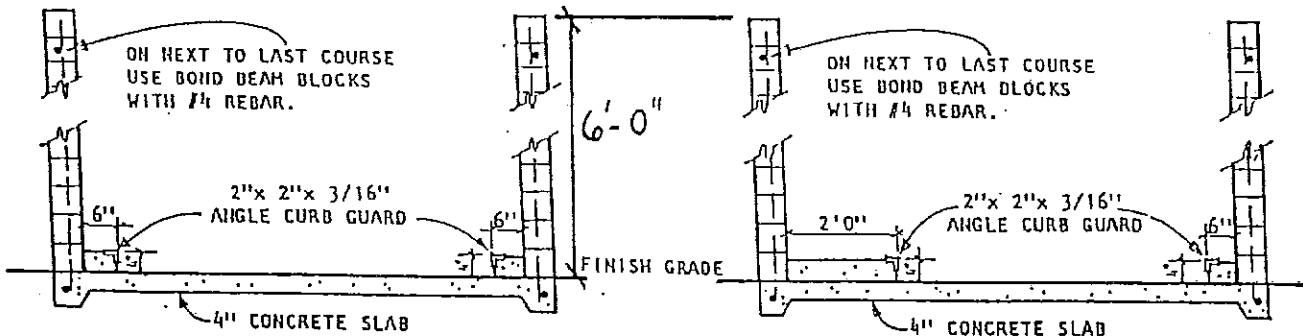
1. Refuse container enclosure to be located clear of other structures where possible, but accessible to both deposit and pickup.
2. Slab to meet finished grade. If slab does not meet finished grade, provide ramp sloped at 1/4" per foot maximum.



AREA IN FRONT TO REMAIN CLEAR TO ENABLE BINS TO BE ROLLED OUT FOR PICKUP  
8'-0" MIN. CONCRETE APRON



AREA IN FRONT TO REMAIN CLEAR TO ENABLE BINS TO BE ROLLED OUT FOR PICKUP  
8'-0" MIN. CONCRETE APRON

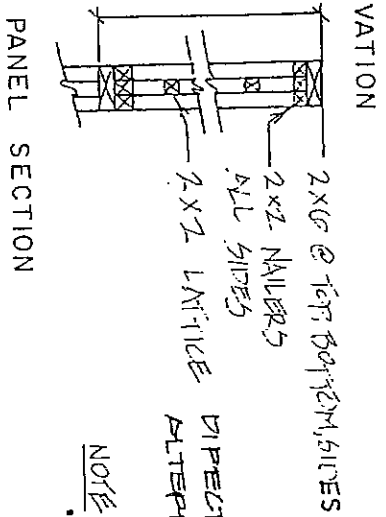
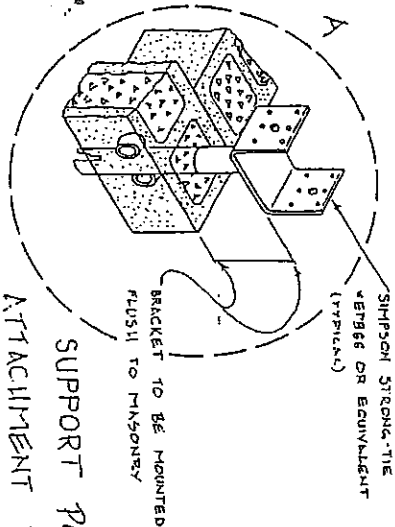
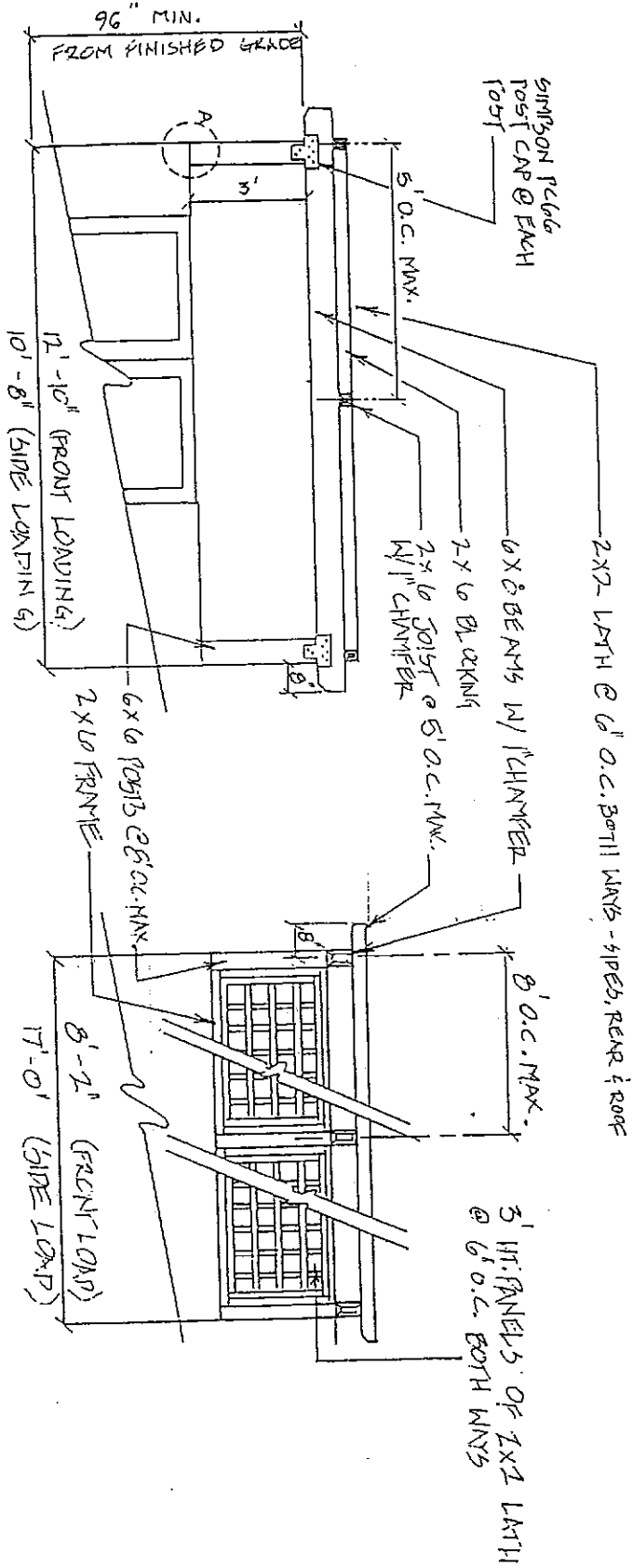


TRASH ENCLOSURE BLOCK TYPE, COLOR, ETC. AND DOOR COLOR SHALL BE SUBJECT TO PLANNING DIVISION APPROVAL.

## TRASH ENCLOSURE TYPES

Refuse Container Enclosure for Multiple-Family Residential, Commercial and Industrial Use

# TRASH ENCLOSURE SCREENING SPECIFICATIONS (OVERHEAD)



NOTE:

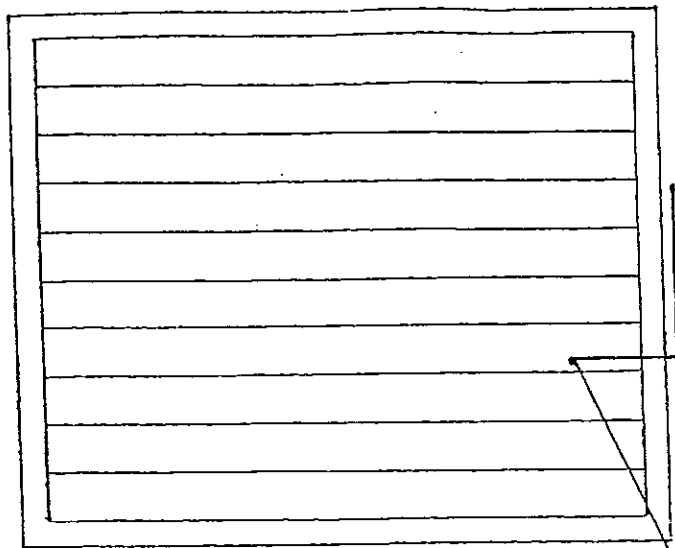
- ALL WOOD TO BE DOUGLAS FIR #1 GRADE - PAINT OR STAIN TO MATCH BLDG-FRAME
- DI. PLECTOR OF DEVELOPMENT SERVICES MAY APPROVE ALTERNATIVE SCREENING DESIGN

**T.E. SCREENING DETAILS**

Refuse Container Enclosure for Multiple-Family Residential, Commercial and Industrial Use

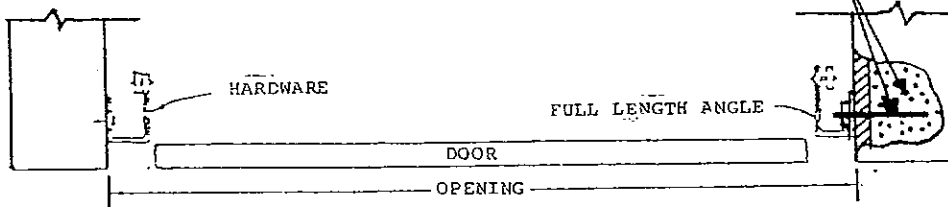






ALUMINUM DOOR PANEL

PROVIDE MIN. THREE (3) 1/2" DIA. AT 2'-0" O.C. RED HEAD EXPANSION BOLTS (OR EQUAL) W/ 6" EMBEDDED INTO CONCRETE BLOCK, (TYPICAL AT EACH SIDE)



STRAIGHT WALL DETAIL

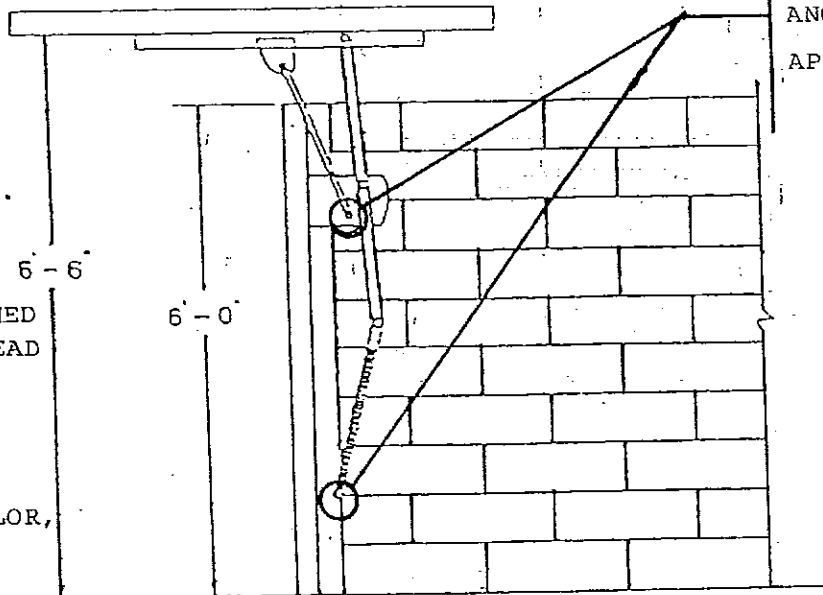
ATTACHMENT TO THE ANGLES, PLEASE SEE U.L. APPROVED MFG. SPECS.

NOTES:

OUTWARD DOOR SWING SHALL NOT INTERFERE WITH DRIVE AISLES, PARKING SPACES, ETC.

DOOR SHALL BE DESIGNED TO ACCOMODATE OVERHEAD TRELLIS.

T.E. BLOCK TYPE, COLOR, ETC. AND DOOR COLOR SHALL BE SUBJECT TO PLANNING DIVISION APPROVAL.



SIDE VIEW - DOOR OPEN

**GARAGE TYPE  
DOOR DETAILS**

Refuse Container Enclosure for Multiple-Family Residential, Commercial and Industrial Use